

# STAGE 6 UPGRADE, MECHANICAL INSTALLATION OF WAS & DEW PACKAGE

## COOMBABAH WASTEWATER TREATMENT PLANT

**Client:** Acciona

**Location:** Coombabah, QLD

**Year of Completion:** 2022

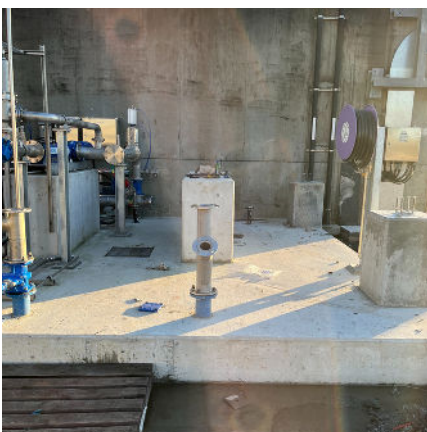
**Project Type:** Metal Fabrication, Project Services & Plumbing

Located near Southport Airfield, Coombabah Sewerage Treatment Plant is one of the largest treatments plants on the Gold Coast, servicing approximately 50% of the city's sewerage. The Gold Coast Council announced that it would put approximately \$150 million\* towards the upgrade to meet the expected growth of the region over the next ten years.

## Fabricated 222.5m of stainless steel piping.

Pructon was engaged to assist with the expansion of the current plant to accommodate this growth. The work included delivering multiple upgrades and additions to the WAS and DEW areas of the treatment plant. As part of the project, Pructon fabricated 222.5m of stainless steel piping in our Gladstone workshop which was then strategically moved by the team from the workshop to the Gold Coast site.

\*City of Gold Coast - [www.goldcoast.qld.gov.au](http://www.goldcoast.qld.gov.au)



## Benefit:

The project will ensure that Coombabah Wastewater Treatment plant is able to operate at the capacity required for the predicted population growth of the Gold Coast, within the next ten years.



## Scope of Work

The scope of work included two main sections - the DEW and WAS sections.

Pructon supplied and installed all pipework and pipe supports.

### DEW

- Installation of centrifuge and associated pipework.
- Installation of dosing skid and transfer skid, along with associated pipework.
- Installation of polymer dosing tank and associated UPVC pipework.
- Installation of potable water assembly and **316 stainless steel pipework**.
- Installation of polymer-powered storage hopper.
- Installation of service water manifold, along with associated **316 stainless steel, 2 inch pipework**.
- Hydrotesting.



### WAS

- Installation of gravity drainage deck.
- Fabrication & installation of fopper.
- Installation of screw pump.
- Installation of 3 thickener feed pumps.
- Installation of DICL pipework.
- Fabrication of receival hoppers.

